

PART S.W. 1/4 SEC. 11, T.5N., R.2W., S.L.B. & M.
RIDGEWOOD ESTATES SUBDIVISION NO.4

IN ROY CITY
SCALE 1" = 40'

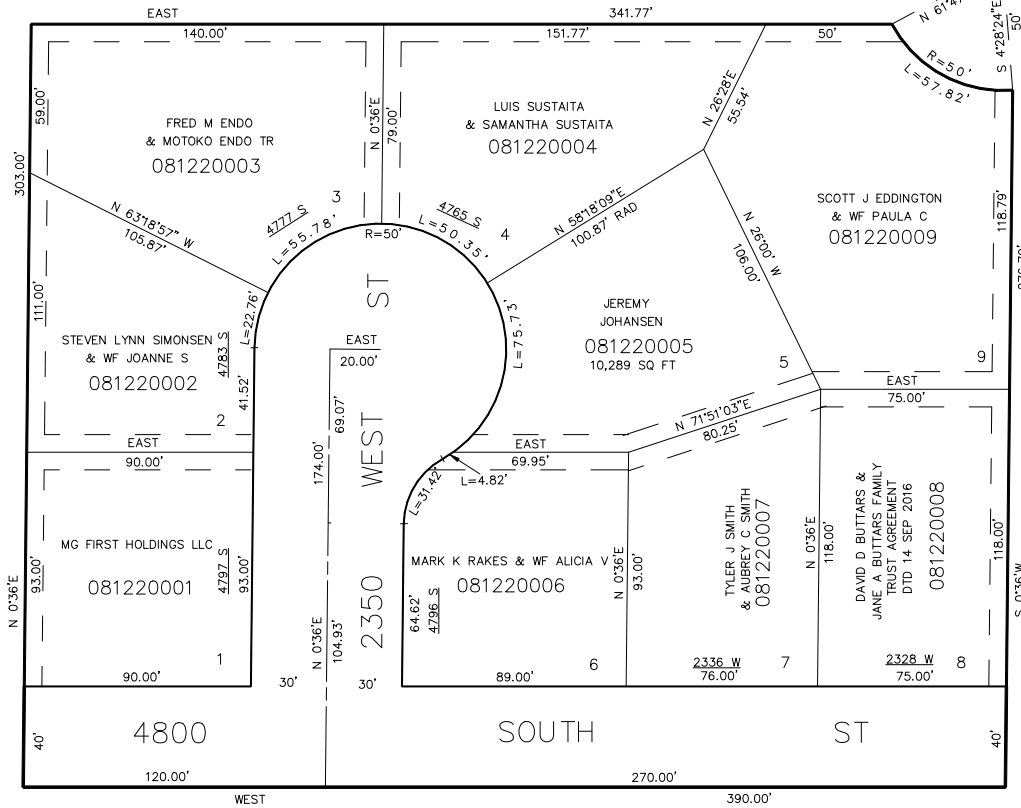
TAXING UNIT: 41

SEE PAGE 61

2325 WEST ST

SEE PAGE 58

SEE PAGE 61



SEE BOOK 9 PAGE 1

7' UTILITY & DRAINAGE EASEMENTS
EACH SIDE OF PROPERTY LINES AS
INDICATED BY DASHED LINES.
EXCEPT AS OTHERWISE SHOWN.

FOR COMPLETE ENG. DATA
SEE ORIG. DED. PLAT IN
BOOK 17 PAGE 11.

FOR TAX PURPOSES ONLY